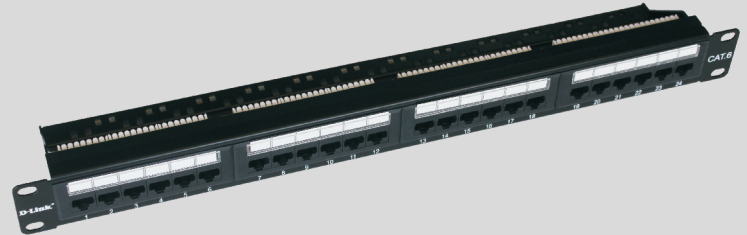


Cat 6 UTP Loaded Patch Panel

D-Link Category 6 patch panels are six port RJ45 modules applied and suitable for 22-26AWG stranded and solid wire, compatible with both 110 & Krone punch down tools. D-Link patch panels have improved Cable Management with optional Cable Management bar terminating 4 pairs UTP cable. They are complied with the ANSI/TIA/EIA-568-C.2 & ISO 11801 standard & ROHs

Approval: UL Listed 



SPECIFICATIONS

- Identification: ID plate: **PC, transparent color with paper**
- Panel: **SPCC, 1.5mm thickness with black color painted**
- RJ45 Jack: Housing: **PBT+Glass fiber UL94V-0**
Contact Brackets: **PBT+Glass fiber UL94V-0 Black Color**
- RJ45 Jack contact: **Material-phosphor bronze with nickel plated**
Finish: **50 micro-inches Gold plated on plug contact area**
- IDC: Housing - **PC, UL94V-0**
Terminal: **Phosphor bronze with tin plated**
- Jack Bracket Set: **ABS**
- Support Bar: **SPCC, 1.5 mm thickness with black color painted**
- Size : **1U & 2U**
- Cable Manager: **19 " rack mountable, Metallic high strength with metal jumper rings for routing cable assemblies, mounts to the front of 19" rack & 1 U height**

- Contact Resistance: **20 Milliohms max.**
- Insulation Resistance: **100 Megaohms min. @ 500 VDC**
- RJ45 Jack Life: **750 Times min**
- IDC Life: **200 Times min**
- Storage: **-40° To +70°**
- Operation: **-10° To +60°**

Mates with modular plug conforming to FCC Part 68

ORDERING INFORMATION

| CAT6 Jack Panel | |
|-----------------|-------------------------------------|
| Part Code | Description |
| NPP-C61BLK241 | Cat6 UTP 24 Port Loaded Patch Panel |
| NPP-C61BLK481 | Cat6 UTP 48 Port Loaded Patch Panel |



D-Link (India) Limited
Kalpataru Square, 2nd Floor, Kondivita Lane, Andheri-East, Mumbai-400059
Specifications are subject to change without notice.
D-Link is a registered trademark of D-Link Corporation and its overseas subsidiaries.
All other trademarks belong to their respective owners.
©2010 D-Link Corporation. All rights reserved. Release 01 (May 2010)